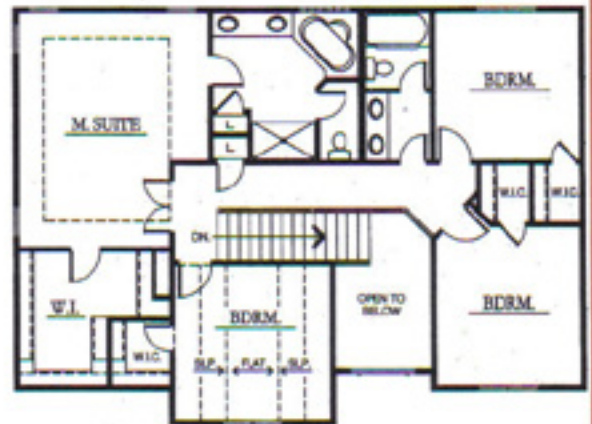


Floor Plan - Marquis V
Square Footage - 2502 Sq. Ft.

Second Floor Plan



Floor plan shows some optional features

First Floor Plan



Monarch Homes

VISIT OUR WEBSITE AT:
www.monarchhomesomaha.com

"Building Quality Homes
for Over Three Decades"

CBSHOME
REAL ESTATE
Clinton Boyd
REALTOR®
Cell: 402-290-5043



STANDARD FEATURES FOR MARQUIS V:

INTERIOR FEATURES:

- 8' CEILINGS
- HEATILATOR GAS FIREPLACE IN FAMILY ROOM
- COLONIST 6-PANEL DOORS OR FLUSH OAK
- OAK TRIM THROUGHOUT
- HUGE KITCHEN w/SUNROOM
- CHOICE OF TILE OR OAK FLOOR IN ENTR
- NUMEROUS WOOD CASEMENT WINDOWS THAT VENT
- SPACIOUS TWO STORY ENTRY w/FULL VIEW WINDOW

KITCHEN:

- CAN LIGHTS
- CUSTOM OAK CABINETS w/RAISED PANEL DOORS
- SUNROOM w/FULL VIEW WINDOWS
- OAK PANTRY
- VINYL FLOOR
- FULL CERAMIC TILE BACKSPLASH
- FORMICA COUNTERTOPS
- CAST IRON SINK W/MOEN FAUCET
- BADGER ONE GARBAGE DISPOSAL
- MELAMINE INTERIORS
- CONCEALED HINGES

DINING ROOM:

- VAULTED CEILING
- OAK TRIM

MASTER BEDROOM:

- VAULTED CEILING w/CEILING FAN
- OAK TRIM
- SPACIOUS WALK-IN CLOSET w/SHOE RACKS
- **MASTER BATH:** DOUBLE SINKS & ONYX MARBLE TOPS
- CHOICE OF CARPET OR VINYL
- NASSAU WHIRLPOOL TUB w/TILE BACKSPLASH
- FIBERGLASS SHOWER W/SEAT
- GLASS BLOCK OR AWNING WINDOW

BEDROOMS #2, #3 & #4:

- HUGE WALK-IN CLOSETS

BATHS & PLUMBING:

- CUSTOM OAK RAISED CABINETS IN BATHROOM
- MOEN SINGLE POINT FAUCETS (LIFETIME WARRANTY)
- 50 GAL. QUICK RECOVERY GAS WATER HEATER
- TWO EXTERIOR FROSTPROOF HOSE BIBS
- ONYX MARBLE TOPS
- HEATING & AIR CONDITIONING:
 - ARMSTRONG +80% EFF GAS FURNACE w/OVRHD FEED
 - ARMSTRONG HIGH-EFF 13 SEER AIR CONDITIONER
 - GENERAL 1040 POWER HUMIDIFIER

BASEMENT:

- 9' POURED FOUNDATION
- 3/4 BATH ROUGH-IN
- FIVE YEAR DAMPROOFING
- INTERIOR DRAIN TILE SYSTEM w/SUMP PIT
- INSULATION PACKAGE

EXTERIOR FEATURES:

- VENTED STORM DOOR
- INSULATED STEEL RAISED PANEL w/OVRHD GAR/DOOR
- 12' x 14' CONCRETE PATIO
- HORIZONTAL LAP SIDING ON ALL SIDES
- PROFESSIONALLY CAULKED
- CHOICE OF SATIN PAINT
- CHOICE OF BRICK (AS PLAN SHOWS)
- ASPHALT SHINGLES
- LINCOLN WOOD WINDOWS
- UP TO 8,000 SQ FT SOD

MISCELLANEOUS:

- R-40 FLAT CEILING INSULATION
- R-19 SIDEWALL INSULATION
- FIVE YEAR TERMITE SOIL TREATMENT

ELECTRICAL:

- PRE-WIRE FOR (12) PHONES AND/OR CABLE
- 220 VOLT CIRCUIT FOR RANGE AND DRYER
- GFI IN BATHS, KITCHEN, EXTERIOR OUTLETS & GARAGE
- 200 AMP SUPPLY PANEL

ALLOWANCES:

- CARPET - \$18.00 S/YD
- BRICK - \$400 PER 1000
- LIGHT FIXTURES - \$2,000
- CERAMIC TILE - \$7.00 S/FT
- APPLIANCES - \$1500
- FRONT DOOR - \$350

OPTIONAL FEATURES:

- THREE CAR GARAGE
- WALKOUT BASEMENT
- WOOD FLOOR IN KITCHEN, SUNROOM, HEARTHROOM
- 9' CEILINGS ON FIRST FLOOR
- ROUNDED CORNERS ON FIRST FLOOR
- GRIDS ON FRONT WINDOWS
- 14' x 17' DECK
- EXTRA WINDOWS IN BASEMENT
- SKYLIGHT IN MASTER BATH & MAIN BATH
- BOOKCASES IN FAMILY ROOM
- LAUNDRY TUB
- CURB GRIND
- SECURITY SYSTEM
- SPRINKLER SYSTEM (ALLOWANCE)
- TIE WALL (ALLOWANCE)
- STEREO SOUND WIRING

SEE AGENT FOR OPTIONAL FEATURES SEEN IN MODEL

**ALL PRICES AND FEATURES SUBJECT TO CHANGE
WITHOUT NOTICE**

VISIT OUR WEBSITE AT: www.monarchhomesomaha.com



Monarch Homes

339-6782